

AGENDA SUPPLEMENT (1)

Meeting: Strategic Planning Committee

Place: Online Meeting

Date: Wednesday 26 August 2020

Time: 10.30 am

The Agenda for the above meeting was published on 18 August 2020. Additional documents are now available and are attached to this Agenda Supplement.

Please direct any enquiries on this Agenda to Lisa Moore, of Democratic Services, County Hall, Bythesea Road, Trowbridge, direct line 01722 434560 or email lisa.moore@wiltshire.gov.uk

Press enquiries to Communications on direct lines (01225)713114/713115.

This Agenda and all the documents referred to within it are available on the Council's website at www.wiltshire.gov.uk

Part I (Pages 3 - 26)

DATE OF PUBLICATION: 21 August 2020

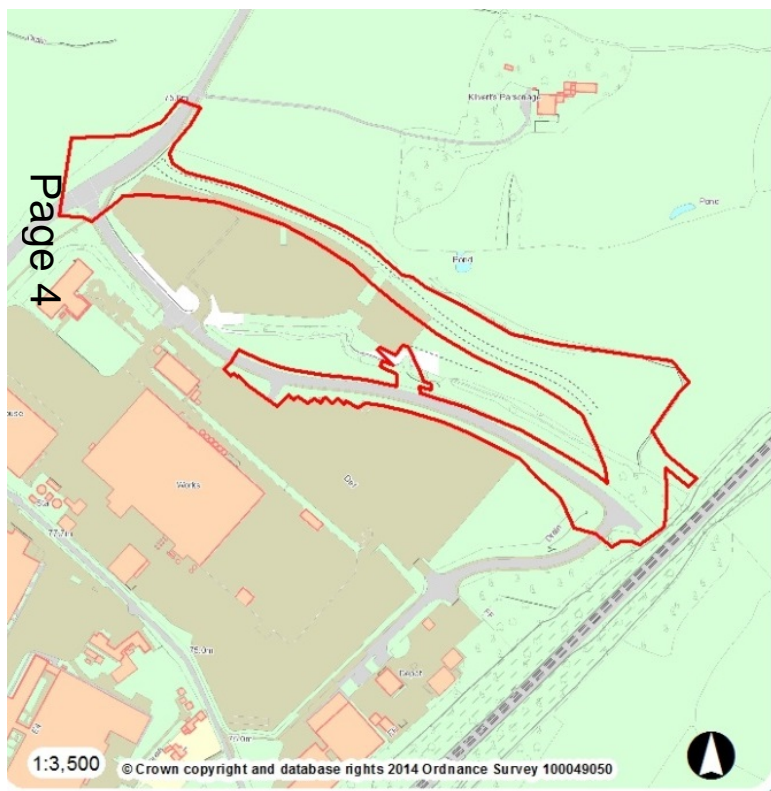
This page is intentionally left blank

Strategic Planning Committee

26th August 2020

17/07793/FUL Wavin Ltd, Parsonage Way, Chippenham, Wiltshire - Works to existing road to provide new road link connecting B4069 Langley Road and Parsonage Way, including the provision of a footway/cycleway and new landscaping. Construction of new gyratory junction on Langley Road. Stopping up of existing section of Parsonage Way and change of use to provide storage area. Construction of link to existing storage area and provision of security fencing.

Recommendation: Refuse planning permission



Site Location Plan



Aerial Photography

Aerial Photograph showing Parsonage Way and incomplete new road



Page 5

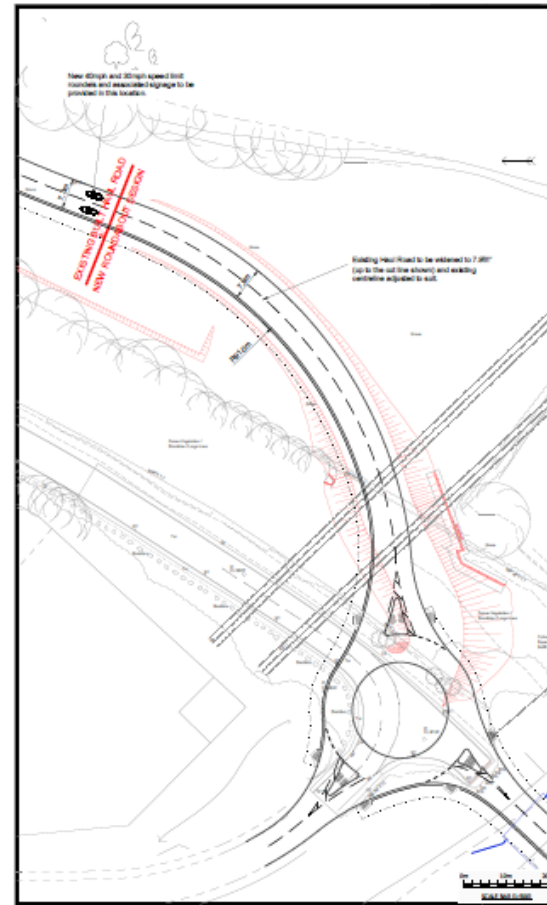
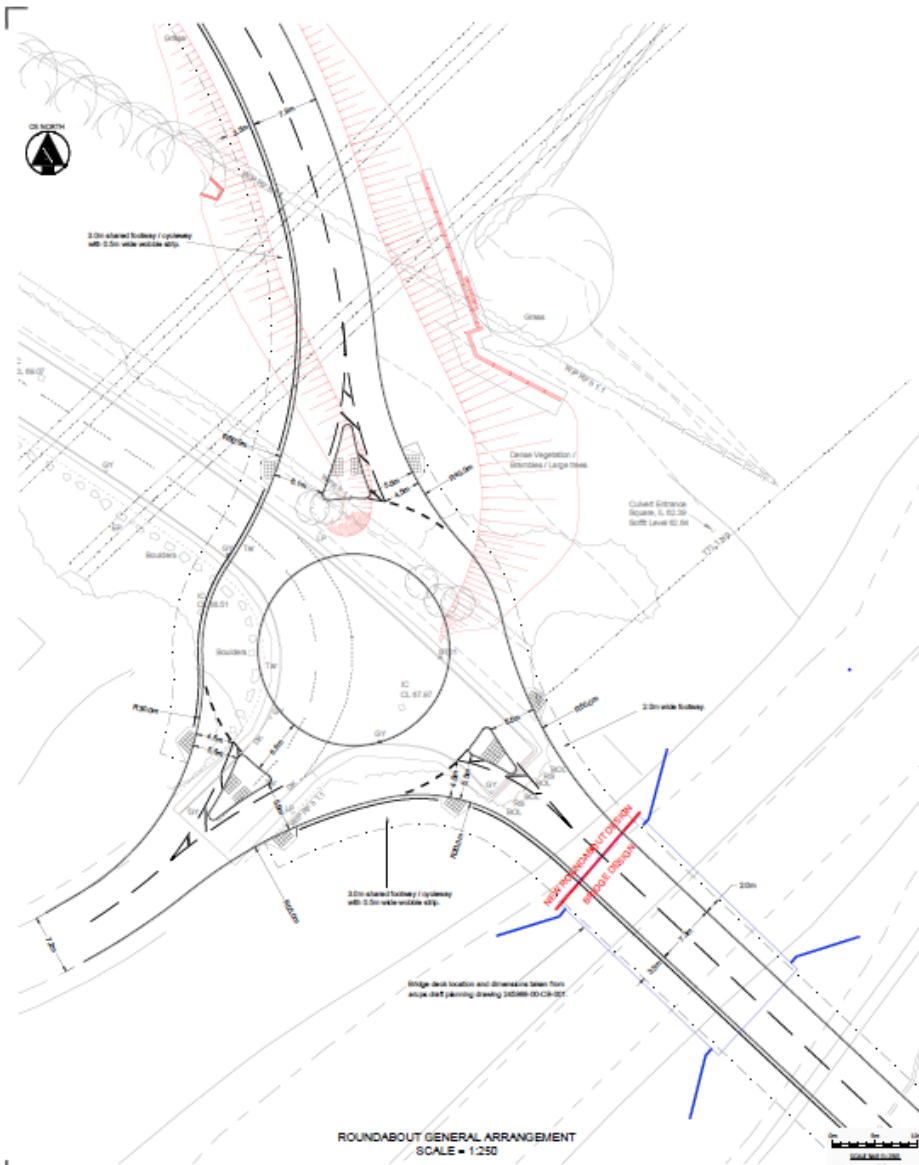
Phase 3B Change of Use



Page 6

Proposed Rail Bridge Link Roundabout Option

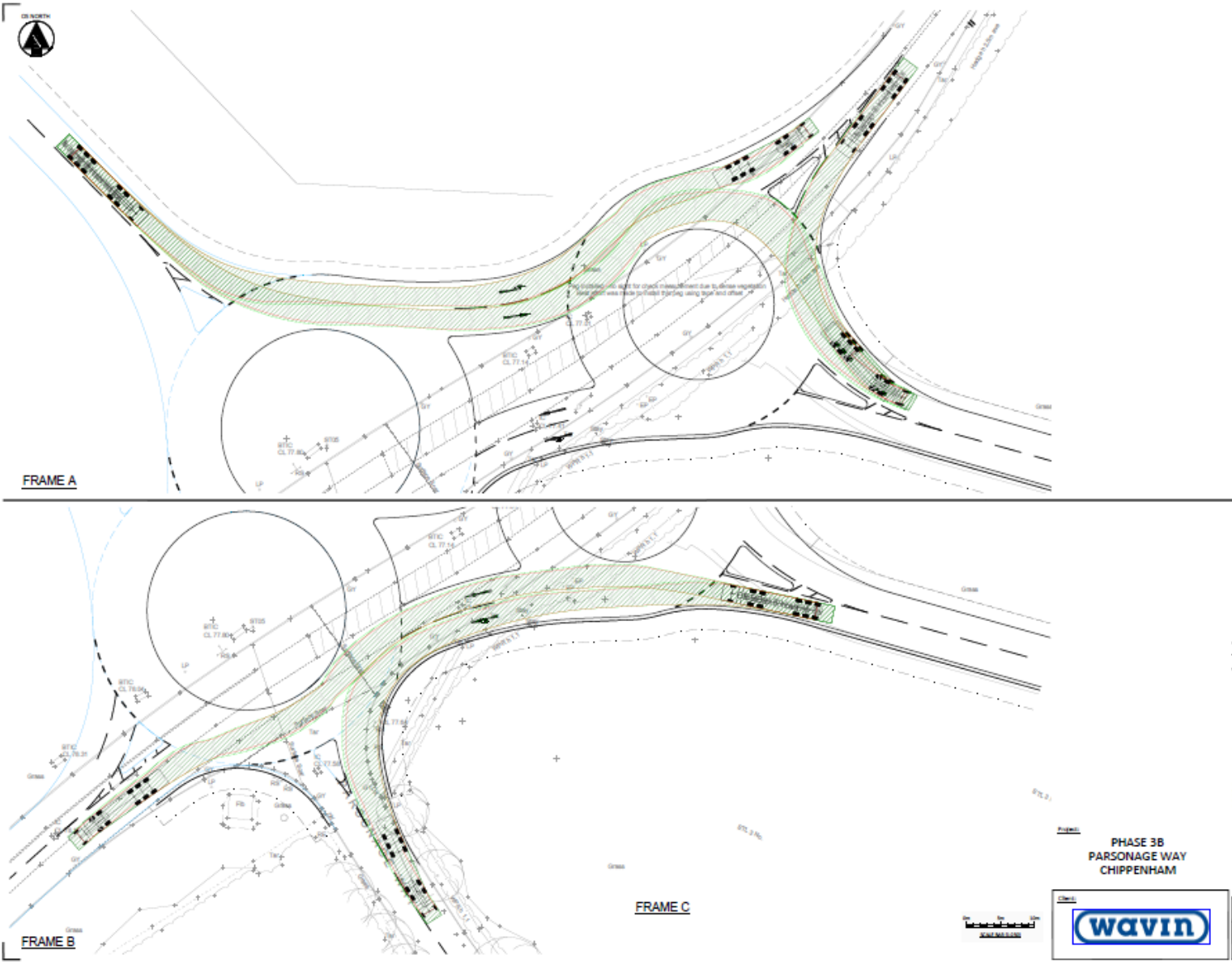
Page 7



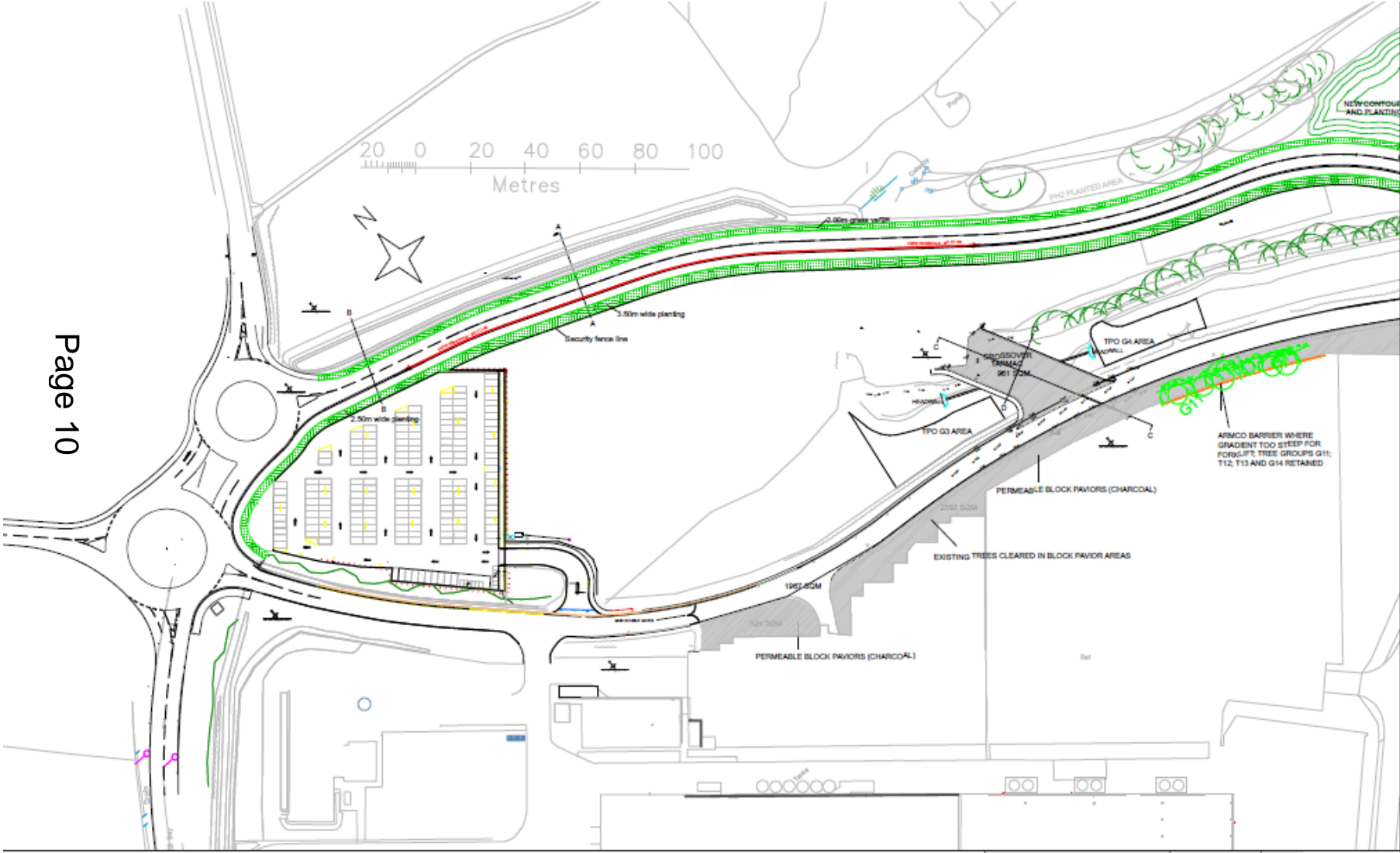
- HAUL ROAD WIDENED
SCALE = 1:500**
- Notes**
1. Topographical survey background taken from Hydraulic drawing number C14360-002 within A.
 2. The design speed is 20km/h / 20km.
 3. Roundabout geometry design is based on DMRS TD 1607 Geometric Design of Roundabouts.

Langley Road One Way Gyratory Swept Path Analysis

Page 8

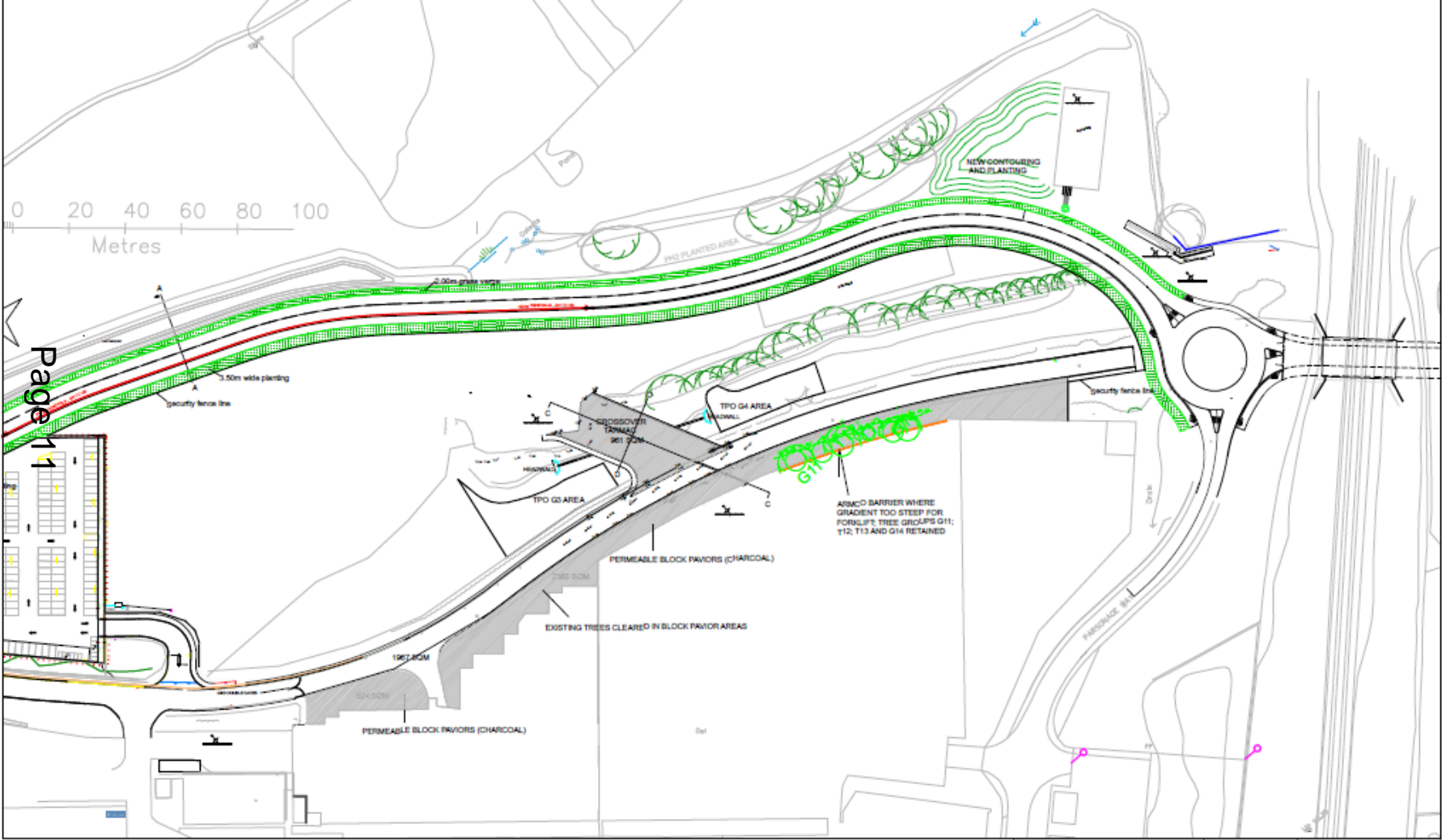


Phase 3B Scheme Overview 1



Page 10

Phase 3B Scheme Overview 2



Phase 3B Scheme Overview 3





New Junction at Langley Road



Southern end where new roundabout linking to Rawlings Green overbridge required

Page 15





PANORAMA A - from junction of new Haul Road with Parsonage Way, looking east

Page 16



PANORAMA B - from immediately south of junction of new Haul Road with Parsonage Way, looking north-east

Salisbury Central Area Framework

David Milton - Team Leader, Major Projects
Presentation to Strategic Planning Committee
26th August 2020

What is the CAF?

- A strategy for Salisbury's recovery following the nerve agent attack in March 2018.
- A strategy that is even more pertinent to the city's recovery post-Covid19.
- A series of recommended projects and initiatives to be taken forward by Wiltshire Council and its partners.
- An evidence base document to guide future planning policies in the Local Plan Review and Salisbury Neighbourhood Development Plan.



Five themes identified by the Central Area Framework

Improving open space and the environment

The delivery of a connected River Park through the city centre and improving connections between the existing green spaces to enhance leisure and enjoyment, while setting aside spaces for nature to flourish.

Bringing out the qualities

To enhance buildings and spaces to best showcase the unique and beautiful heritage of Salisbury.



1

2

3

4

5

Creating people friendly streets

To make the central area a better place for people to move around safely, comfortably and in a more pleasant environment with reduced noise and air pollution and reduced greenhouse gas emissions, prioritising cycling, walking and public transport.

Creating vibrancy

Enabling spaces and premises in the city to adapt to uses which provide entertainment and experiences to residents and visitors in addition to the day-to-day retail, leisure and service offer.

Identifying character areas and their role in the city

Defining identity and purpose to the various parts of the central area to enhance their character and roles

Creating people-friendly streets

- To improve the experience of walking and cycling within, to and from the central area
- To define a 'street hierarchy' designed to reduce the dominance of the private car within the city centre
- To utilising Park and Ride facilities and work closely with public transport providers to improve services
- To consolidate car parking in the city centre

Page 20

Improving open space and the environment

- To deliver the River Park project
- To celebrate the city's relationship with the rivers and meadows

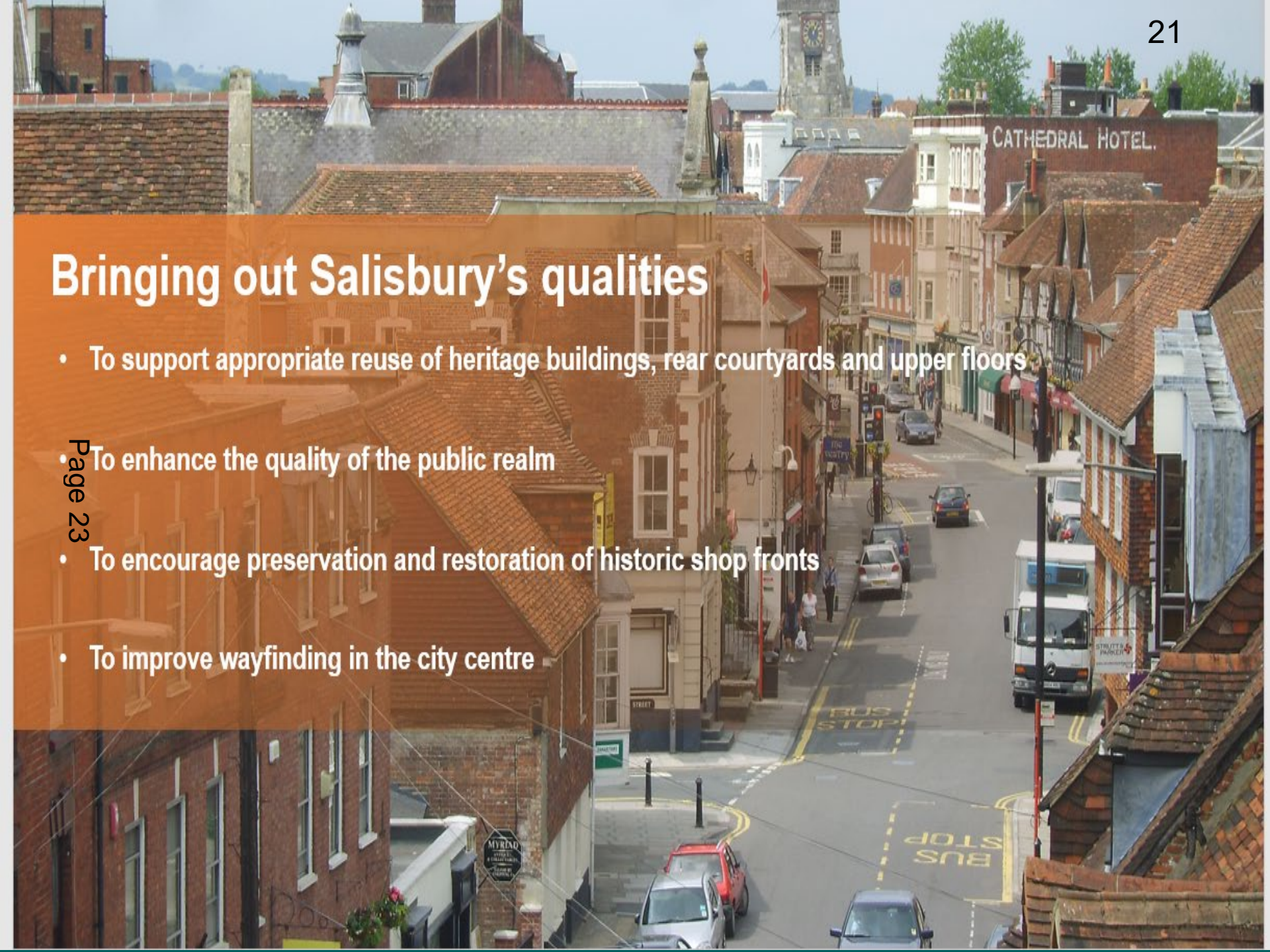
Page 21

Creating vibrancy

- To accommodate changes in retail and leisure floorspace requirements to encourage city centre resilience
- To encourage use of vacant upper floors and under-utilised buildings in the city centre
- To encourage pop-up/meanwhile uses and events / experiences for those visiting the city centre
- To improve and protect the evening and night-time economy

Bringing out Salisbury's qualities

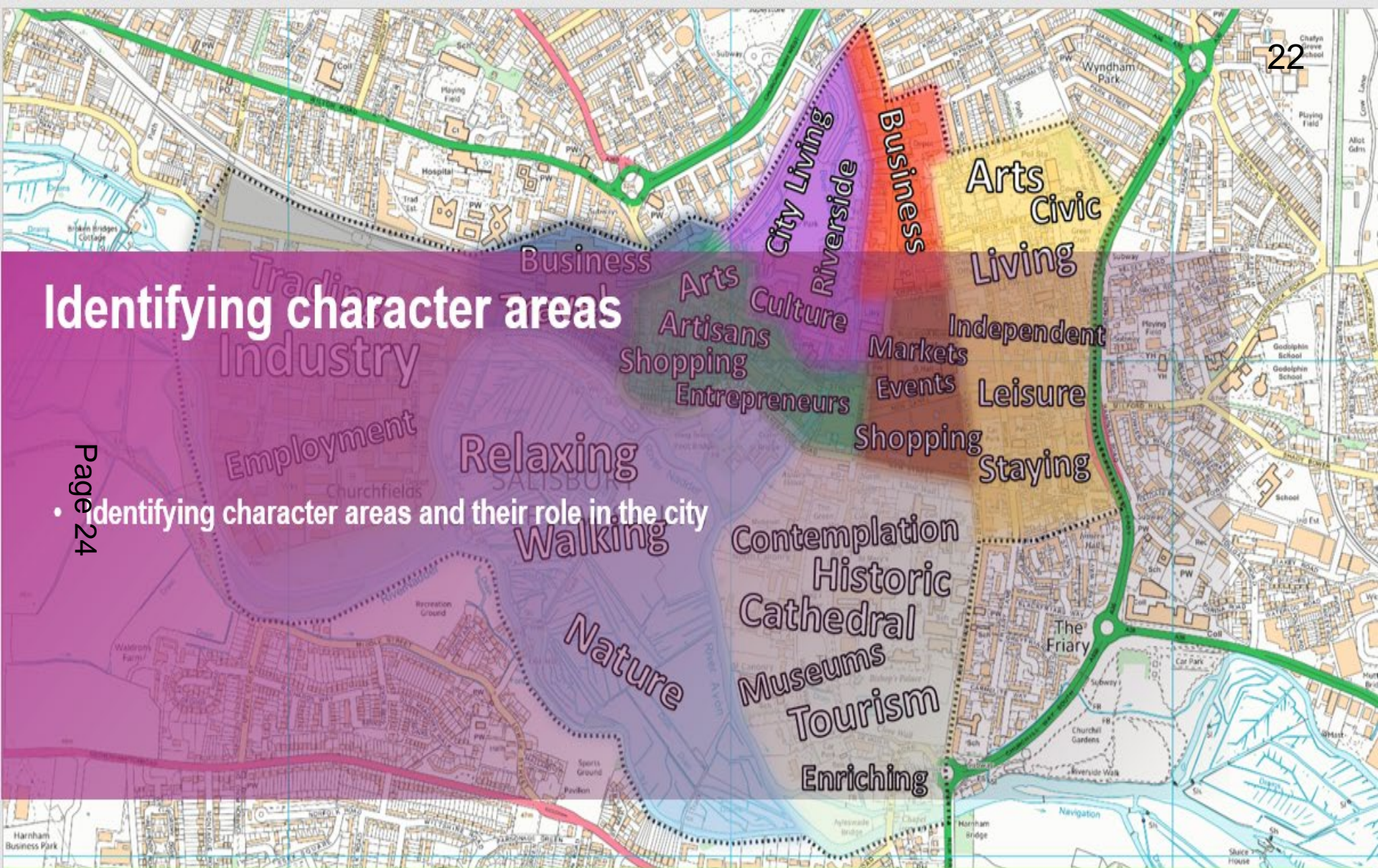
- To support appropriate reuse of heritage buildings, rear courtyards and upper floors
- To enhance the quality of the public realm
- To encourage preservation and restoration of historic shop fronts
- To improve wayfinding in the city centre



Identifying character areas

Page 24

Identifying character areas and their role in the city



Public consultation

- Two stages of public consultation
 - Jun - Aug 2019
 - Jan - Feb 2020
- Jan - Feb 2020 consultation:
 - Two extensive and well attended public exhibitions held during the first two weeks of the consultation period.
 - 312 responses received from a range of residents/stakeholders.
 - Overall considerable level of support for the CAF and the projects and initiatives being consulted on.

84% in support of developing a 'street hierarchy' to prioritise streets and spaces for pedestrians and cyclists over cars.

63% in support of consolidating city centre car parking and improving Park & Ride facilities.

84% in support of improving the urban environment of Fisherton Street.

91% in support of delivering a River Park.

91% in support of exploring opportunities to repurpose empty or underused buildings deliver workspaces and residences.

91% in support of improving opportunities for engagement with and enjoyment of Salisbury's rivers and meadows.

90% in support of enabling temporary/pop-up uses in vacant buildings and supporting activity in the Market Place.

88% in support of enhancing the railway station area.

85% in support of exploring ways to improve the appearance and quality of Salisbury's historic shop frontages.

86% in support of delivering improved pedestrian and cycling wayfinding infrastructure.

70% in support of delivering new public art in the city.

63% in support of defining character areas in Salisbury's central area.

Strategic Planning Committee

26th August 2020